

---

# CSFN NEWS

---

SF PLAN BAY AREA 2050 another perspective by Glenn Rogers



### Transamerica Pyramid from above

The authors of the *San Francisco Plan Bay Area 2050* are asking for public feedback on their 9-county plan to provide solutions for the economy, the environment, housing and transportation. This article considers major global changes that could influence development in San Francisco that should be taken into account.

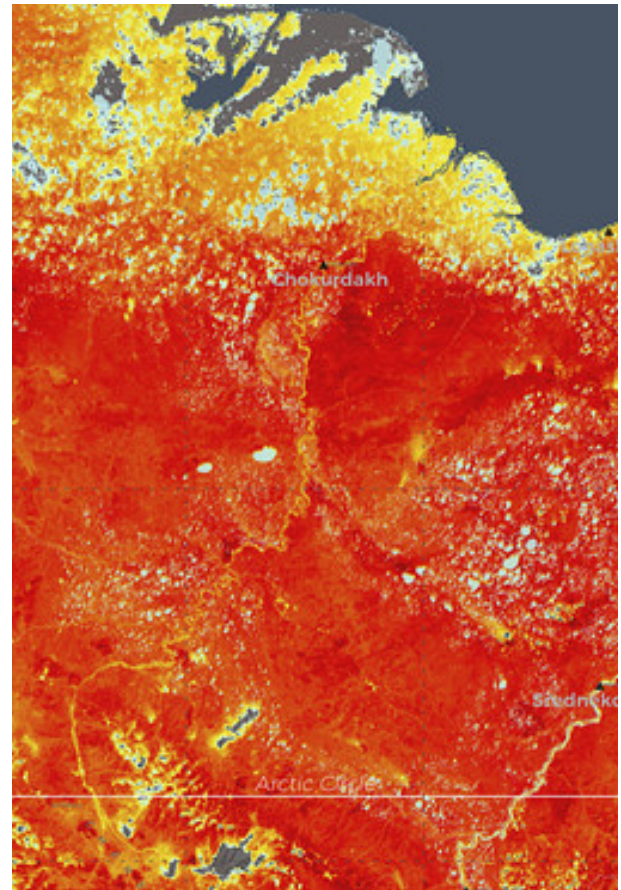
Many flat parts of downtown San Francisco were filled in with soil to make the downtown bigger and to make the port better for shipping.

### Siberian Heat Wave

The Russian Tundra, has experienced wild fires lasting months at a time recently. Winter rains are often required to put them out. Last August more than 9,880,000 acres burned in the Russian Arctic. Temperatures as high as 100.4 degrees F. were recorded in this region. The fires and high temperatures release large quantities of methane, which is more destructive to the environment than CO2, into the atmosphere. (1) Local newspapers noted the rise in methane here and attributed it to leaks in local gas lines, but this was not the primary source.

### Australian Wild Fires

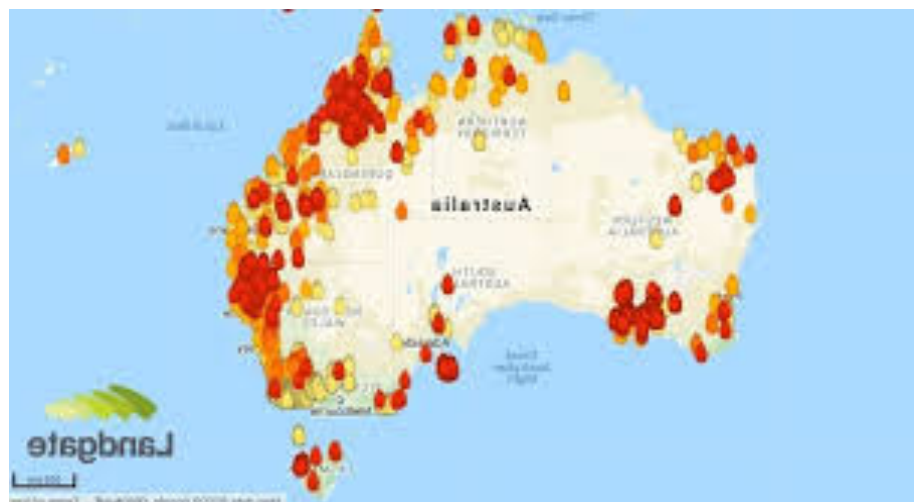
Australia has been experiencing major wild-fires for years. Some cover an area the size of Great Britain. One fire lasted from June 2019 to March 2020. These fires burned 47 million acres, killed or displaced 3 billion animals and killed 33 people. (2)



**Russian Tundra temperatures.**

Wild fires not only affect the quality of the air we breathe, the resultant temperature rise can be debilitating to icebergs in the Antarctic. As temperatures rise above 32 degrees F. ice starts to

**One Wildfire in Australia lasted from June 2019 to March 2020.**



melt. The icebergs are more vulnerable to catastrophic collapse than many of us realize.





### Thwaites Glacier

The Thwaites Glacier in Antarctica, is around the size of Florida. Recent studies in nearby Esperanza, considered the coldest place on earth, have registered temperatures as high as 64.9 degrees F.

Scientists fear the glacier is melting from high temperatures on top, while warmer water in the sea beneath, is melting it from the bottom. Today, water underneath this Glacier is 2 degrees warmer than freezing. (3)

The problem with the Thwaites Glacier melting is that when it goes into the ocean, it is expected to raise the height of the sea level around 3 feet over night. Nearby glaciers are believed to be dependent on the Thwaites Glacier for stability and would also fall into the ocean, adding another 11' to the rise.

### Effects on SF Bay

A 3' rise of sea level will be catastrophic to San Francisco and local development. Other areas that will be drastically impacted would be Miami, Florida; New York, New York; London, England; Bangladesh and many more low-lying areas.

In San Francisco the list of areas of concern are:

- The whole of the Embarcadero will eventually be underwater, including the Embarcadero BART Stations. Highway 101 now has sandbags to keep water from entering this highway in parts of San Mateo. Imagine the problem with sea level rises of 3'-11'.
- Treasure Island is said to be adding 3' of fill to the island to keep it above water, but, that is not enough. In addition to the flooding problem, Treasure Island is believed to have radioactive and toxic materials present, that would leak into the bay. (4) This could cause a catastrophic effect on sea life and the fishing industry. In addition to the water rising, the northern portion of Treasure Island is sinking 1/2" a year.
- All parts of downtown that were filled in during the 1906 earthquake and fire will be underwater, as well as parts of Market Street, Mission Bay, the Marina and parts of Hunter's Point.
- The TransBay Terminal is close to the Embarcadero and is vulnerable to flooding.

\* CalTrain is also on flat land that is vulnerable to sea rise.

### Thames Barrier

London, England has been around a lot longer than San Francisco and was long ago forced to control their water flow issues to improve drainage, sewer functioning and flooding of low-lying areas. They created a mechanical barrier that stops high tide from intruding into their city.

The Thames Barrier was built in 1982. (5) This barrier is closed during high tides and during storm surges. During low tide, the barrier is opened to allow water to leave.

A similar flood control system may be appropriate for the SF Bay area. Since the solution of Climate Change is not completely our responsibility or something we can correct ourselves alone, it seems likely that a local flood control barrier may be the best local solution to the problem of future flooding in San Francisco.



### A New Fire Season?

### Thames Barrier

Just in the last month of August 2020, we have witnessed numerous changes in our weather. This August, we experienced a derecho or a summer storm. This derecho provided us with hurricane force winds, heavy rain and for Northern California, over 1,400 strikes of lightning, creating 700 fires and burning 4 million acres of land, as of September 13, 2020. (6) In parts of the United States, derechos occur every year. Frequently, tornadoes come with derechos. Is California to expect in the future, two fire seasons, one in August and one in late fall, with derechos becoming more common place? If so, this would be catastrophe.

Part of the problem with fire management in California has been that for decades complete fire suppression was the norm. We have Smokey the Bear and the 10 am fire rule, where all fires needed to be put out by that time every morning to blame. This has allowed large masses of biofuel to accumulate in our forests. When this fuel is on fire, the temperatures are hot and the damage is extensive.

One solution to manage our fire season would be to provide controlled burning, when conditions in the forest have a manageable fuel load, when wind speeds are favorable and not towards valuable housing and humidity is accommodating. Controlled burning was suggested in an area beside Sky Ranch, CA but the residents

refused. Now, over 73 homes have been destroyed in Sky Ranch, some homes were over \$1 million. (7) An aversion to controlled burning by the public is common place here in California. This year, only 10,000 acres have been managed with control burns. Slowing down this process of controlled burning has been an excessive amount of “red tape” required by Cal Fire to begin the process. Lastly, even environmental groups have discouraged the use of control burning at times. Controlled burning could be our best way out of a difficult fire season. However, where fuel loads are too large because of decades of fire suppression, there will need to be removal of excessive fuel loads mechanically, to minimize the intensity of the wildfires and to keep them in control.

Areas of forest fire danger in San Francisco are:

- \* The Eucalyptus forest surrounding Sutro Tower.
- \* The Eucalyptus forest atop Mt. Davidson.
- \* Eucalyptus trees beside Highway 280 used for soil stabilization.
- \* Eucalyptus trees along the Brotherhood Greenbelt.

Should these Eucalyptus trees catch fire, their embers can spread 3 miles in any direction. This would make all of San Francisco vulnerable.



**Oakland Hills Firestorm**

One major concern in Oakland is:

- \* The Joaquin Miller Park which since the devastating Oakland Hills Firestorm in 1991, has increase fuel loads 2-3 times the amount since then. (8) (9)

**FOOT NOTES:**

1. <https://abcnews.go.com/International/wireStory/arctic-fire-siberian-heat-wave-alarms-scientists-71421935>
2. <https://www.foxnews.com/world/australia-wildfires-wildlife-disaster-3-billion-animals-fire-world-wildlife-fund>
3. <https://interactive.pri.org/2019/05/antarctica/thwaites-glacier-collapse.html>
4. [https://www.sfchronicle.com/bayarea/article/Lawsuit-seeks-billion-in-damages-halt-to-14999773.php?utm\\_source=newsletter&utm\\_medium=email&utm\\_content=headlines&utm\\_campaign=sfc\\_morningfix&sid=53ba5f9f9dbcd4ec6e000221](https://www.sfchronicle.com/bayarea/article/Lawsuit-seeks-billion-in-damages-halt-to-14999773.php?utm_source=newsletter&utm_medium=email&utm_content=headlines&utm_campaign=sfc_morningfix&sid=53ba5f9f9dbcd4ec6e000221)  
[https://www.sfchronicle.com/business/article/California-begins-planning-for-transition-away-14996560.php?utm\\_source=newsletter&utm\\_medium=email&utm\\_content=headlines&utm\\_campaign=sfc\\_morningfix&sid=53ba5f9f9dbcd4ec6e000221#](https://www.sfchronicle.com/business/article/California-begins-planning-for-transition-away-14996560.php?utm_source=newsletter&utm_medium=email&utm_content=headlines&utm_campaign=sfc_morningfix&sid=53ba5f9f9dbcd4ec6e000221#)
5. [https://en.wikipedia.org/wiki/Thames\\_Barrier](https://en.wikipedia.org/wiki/Thames_Barrier)
6. [https://www.sfchronicle.com/california-wildfires/article/Weather-has-helped-but-may-soon-hurt-15517110.php?utm\\_source=newsletter&utm\\_medium=email&utm\\_content=headlines&utm\\_campaign=sfc\\_morningfix&sid=53ba5f9f9dbcd4ec6e000221](https://www.sfchronicle.com/california-wildfires/article/Weather-has-helped-but-may-soon-hurt-15517110.php?utm_source=newsletter&utm_medium=email&utm_content=headlines&utm_campaign=sfc_morningfix&sid=53ba5f9f9dbcd4ec6e000221)
7. <https://www.usatoday.com/story/news/nation/2020/08/29/controlled-burns-help-prevent-wildfires-some-california-resist/5668869002/>
8. <https://sanfrancisco.cbslocal.com/2019/07/11/oakland-hills-fire-risk-grows/>
9. <https://www.kqed.org/news/11835084/to-manage-wildfire-california-looks-to-what-tribes-have-known-all-along>

**Glenn Rogers, RLA**  
**Vice President of CSFN**  
**Landscape Architect**  
**License 3223**





### From the President's Desk...

#### **WE'RE HAVING A HOLIDAY HAPPY HOURS PLUS ON ZOOM!**

Although I had contacted Sherri Nash about possibly doing a dinner at Patio Espanol as per our reservation for a holiday party in December, I think we should plan otherwise. Even if modified sheltering in place is doable, risks to our members are too great. Other organizations are having various types of meetings remotely also, some hybrid and some all virtual. ( still hope to have restaurant meetings eventually..)

We have had success with our monthly meetings on Zoom, and I think we can have a good time with some of our traditional parts. (Planning will be important ) The speaker can be invited, the honorees selected and the invitations made, all as before. Our members can be solicited to provide sponsorships, which will include credit in the program and door prizes to be awarded. No toys can be collected, but donations can be made; contests for various awards can be de-

signed. An auction, raffle or both can be held.

The agenda would start with the President's welcome, each organization would be recognized and give a short shout out as to their neighborhood. A toast would be made (BYOB!). The keynote speaker would then give an address, ten minutes with some Q&A. At this point we could have a fun break with cameos from old friends or go on further with recognitions. Our honorees would each get a shout out for their award (to be sent beforehand or afterward) and two minutes to respond.

We might also solicit contributions from donors in different categories who would have shout outs and credits in the program. We could show short videos about this year and/or have collages of pictures from parties past and music at the end (for a singalong,, perhaps?)

#### **IT IS PAST TIME TO SIGN UP FOR A COMMITTEE!**

The work of our federal, state and local governments depends on the meetings and outputs of the committees that form the backbone of the legislative, oversight and self-monitoring that they do. The same is true for CSFN and each of the neighborhood groups that compromise our organization! We have several standing committees that are self-selected, neither elected nor appointed, and each wants members.

1. Land Use and Transportation is working to Nix the Nine bad bills in Sacramento and stop congestion pricing.
2. Government and Elections just finished our meeting voting on ballot measures and will continue overseeing the outcome in November.
3. Bylaws is working on finalizing a measure to present.
4. Events is working on Candidate forums and is planning a holiday zoom!**SO DON'T DELAY: SIGN UP! TODAY!**





**CSFN GENERAL ASSEMBLY AGENDA ON SEPT. 15, 2020 ON ZOOM  
TIME 6:30 pm**

- I. CHECK IN AND ANSWER POLL; SHORT ANNOUNCEMENTS.
- II. PROGRAM; ABAG PLAN 2050. SPEAKER: Director of City Wide SF PLANNING DEPT. will send her deputy to brief us.
- III. OFFICERS' REPORTS
  - A. President
  - B. Vice President
  - C. Secretary
  - D. Treasurer
- IV. COMMITTEE REPORTS by Chairs
  - A. Ex Committee
  - B. Bylaws- membership
  - C. LUTC See Mari Eliza's report
  - D. G&E - slate card
  - E. Events Committee
  - F. Other
- V. APPROVAL OF DRAFT MINUTES FOR AUGUST 18, 2020
- VI. UNFINISHED BUSINESS (continued from before)
  - A. Committee signups (See From the Desk of the President)
  - B. The conversation Continues...
- VII. NEW BUSINESS
  - A. New Resolution – Resolution from GWPNA about Community Action to Rescue Edgehill Mt. Development
  - B. Future Programs (See From the Desk of the President)
- VIII. ADJOURNMENT



**MINUTES OF AUGUST 11, 2020 CSFN ASSEMBLY MEETING ON ZOOM at 6:30 pm**

I.

II. **CALL TO ORDER:** President Head called meeting to order at 6:36 p.m.

III. **ENTRY POLL:** Quorum confirmed – 23 participants:

A. 14 member organizations present (14 delegates + 1 alternate)

B. 8 guests

IV. **ANNOUNCEMENTS:**

A. SHARP, OMI-NIA and THD hosting District Supervisor candidate forums in the coming weeks. Info will be posted to CSFN website.

**V. PROGRAM:** November 2020 ballot measures discussion.

**A. Prop A:** George Wooding explained property tax bond measure for capital improvements. GA discussion and vote: 2 support / 6 oppose.

**B. Prop B:** Jasper Wilde spoke in favor of Supervisor Haney's charter amendment to split off Public Works' street cleaning, sidewalk maintenance and sanitation duties into a new agency. GA discussion and vote: 0 support / 8 oppose.

**C. Prop C:** Natalie Gee spoke in favor of Supervisor Walton's measure to allow local commission appointments regardless of immigration status. No GA discussion or vote.

**D. Prop D:** Natalie Gee spoke in favor of Supervisor Walton's measure to create Sheriff's oversight board. GA discussion and vote: 1 support / 6 oppose.

**E. Prop E:** Caitlin Vejby spoke in favor of Supervisor Yee's police staffing measure to eliminate the existing fixed staffing requirement. GA discussion and vote: 0 support / 9 oppose.

**F. Prop F:** Measure to overhaul the business tax structure from payroll tax to gross receipts tax. GA discussion and vote: 7 support / 0 oppose.

**G. Prop G:** Caitlin Vejby spoke in favor of measure to allow 16-17 year olds to vote in local elections. GA discussion and vote: 0 support / 8 oppose.

**H. Prop H:** Charles Head explained the measure to streamline the city permitting process for new businesses and for existing storefronts seeking to make changes to their operations. GA discussion and vote: 8 support / 2 oppose.

**I. Prop I:** Kyle Smeallie of Supervisor Preston's office spoke in favor of measure to double real estate transfer tax on properties sold for \$10 million or more.

Jay Cheng of the SF Chamber of Commerce spoke in opposition to the measure. GA discussion and vote: 0 support / 7 oppose.

**J. Prop K:** Laksh Bhasin spoke in favor of Supervisor Preston's measure to authorize the city to build or rehabilitate up to 10,000 units of affordable housing.

GA discussion and vote: 0 support / 7 oppose.

**K. Prop L:** Abigail Rivamonte Mesa spoke in favor of Supervisor Haney's proposal for a CEO tax. GA discussion and vote: 2 support / 5 oppose.

**L. Measure RR:** A three-county sales tax measure to fund Caltrain. Vote taken for interest only: GA discussion and vote: 5 support / 2 oppose.

**M. Prop 15:** Ben Grieff of Evolve CA spoke in favor of state initiative to reassess commercial/industrial properties yearly at market value instead of within the caps set by Prop 13. Susan Shelley of Howard Jarvis Taxpayer's Association spoke in opposition to the initiative. Vote taken for interest only: GA discussion and vote: 6 support / 1 oppos

**VI. APPROVAL OF JULY G.A. MINUTES:** M/S/C as presented.

A. PRESIDENT: BOS recessed, no city committee meetings, no Planning Commission meetings. Attended Nix the Nine meeting regarding stopping particular Housing Bills in state legislature. Please read the president's newsletter article on voting the ballot top to bottom.

B. VICE PRESIDENT: No report due to time limits.

C. RECORDING SECRETARY: No report due to time limits.

D. CORRESPONDING SECRETARY: No report due to time limits.

E. TREASURER: No report.

**VII. COMMITTEE REPORTS:** No reports due to time limits.

**VIII. UNFINISHED BUSINESS:** Nothing discussed due to time limits.

**IX. NEW BUSINESS:**

A. Prop. H suggested for CSFN paid ballot support.

B. Prop. F suggested for CSFN paid ballot support.

**X. NEXT MEETINGS:**

A. SEPTEMBER GENERAL ASSEMBLY: Tuesday, August 15 at 6:30 p.m. on Zoom

**XI. ADJOURNMENT:** At 9:49 p.m.

*Submitted by Cindy Beckman*



## **EDGEHILLMOUNTAIN RESOLUTION**

**Whereas:** the Edgehill Mountain proposal did not have proper citizen notification.

**Whereas:** Risk of destabilizing a fragile, steep rock slope with a long history of dangerous and destructive landslides provoked by excavation. This has happened in 1958, 1967, 1978, 1982, 1995, 1997 and 1998, in one case requiring demolition of a home and in another dumping rubble up to the second story of nearby homes. The land in question is near the site of the 1997 landslide. No remediating solution is possible to satisfactorily prevent this risk.

**Whereas:** Negative Ecological Impact. Destruction of an acre of wooded green space, including precious native forest which currently provides shade, tranquility and natural splendor in an area short on such spaces. Removal of trees capable of absorbing 60 tons of CO2 yearly to be substituted with \$1Million of cement merely for foundation work to seat five multimillion dollar luxury homes deep into the hillside.

**Whereas:** Traffic hazard and congestion on a 15.5 foot two-way street already too narrow for cars to pass in presence of parked vehicles and challenging for emergency vehicles despite being an essential route between the SF Fire Station 39 and adjacent neighborhoods. Hazardous addition of new driveways on a blind curve at a site frequented by playing children and families.

**Whereas:** Damaging air pollution affecting neighbors and hundreds of nearby schoolchildren, many traversing the site directly enroute to three schools. Particulate matter, especially dangerous silica, would be heavily aerosolized in the excavation and removal of an hillside-worth of Franciscan Chert rock. Chert is a hard, fine-grained sedimentary rock composed of microcrystalline crystals of quartz, the mineral form of silicon dioxide.

**Resolved:** The Edgehill proposal is a danger to both the surrounding neighbors and local environment.

**Resolved:** The Edgehill project should either be terminated or relocated via a land swap.





## CSFN EXECUTIVE COMMITTEE MINUTES

**Wednesday, August 26, 2020 / 5:30 PM / Northern Station**

Charles Head, Glenn Rogers, Greg Scott, Cindy Beckman,  
Mary Harris, and Claire Zvanski. Excused Richard Frisbie

- 5:35 pm I **Call to Order** / Ascertain Quorum/Met
- 5:36 pm II **Officers Reports**
- A. President: Planning Commission not meeting, Hasting settlement proceeds, Balboa Reservoir proceeds, revenue enhancement measures, BOS hopes for revenue enhancement from voters.
  - B. Vice President: Went to the Dept. of Elections to submit argument for Prob. F
  - C. Recording Secretary: Had questions about recording the tally of votes
  - D. Treasurer: No financials this month.
- 5:41 pm III **Committee Action Items**
- A. Executive No exceptions to 35 member organizations joining CSFN.
  - B. Land Use and Transportation: CSFN to support Gordon Mar in not support ABAG interest in more market rate housing.
  - C. Government and Elections: See newsletter.
  - D. Events Committee See message from the President's Desk.
  - E. Media and Outreach: Raise money for those that need it. Pursue the President's proposal. of a ZOOM meeting.
  - F. Newsletter We need suggestions for a N>
  - G. Open Space: Fire destruction down 85% since last year.
- 6:12 pm IV **General Assembly Meeting Draft Minutes** No submittal yet.
- 6:12pm VI **New Business**
- A. Program about SF Bay Area Plan 2050 by a member of the Planning Department.
  - B. NL to have wildfire included.
- 6:23 pm V **Unfinished Business**
- A. The Conversation Continues... Please follow us through LinkedIn, Facebook and Twitter to have our CSFN status improved. Let us have more members of CSFN be part of our GA meetings.
  - B. We suggest others be able to host meetings through ZOOM
- 6:29 pm VII **Adjourn**

**Glenn Rogers, Vice President**



## CSFN SLATE CARD, NOVEMBER 3, 2020 ELECTION

### BOND

A Health and Homelessness, Parks, and Streets Bond NO

### CHARTER AMENDMENTS

B Department of Sanitation and Streets, Sanitation and Streets Commission, and Public Works Commission NO

C Removing Citizenship Requirements for Members of City Bodies NO

D Sheriff Oversight NO

E Police Staffing NO

F Business Tax Overhaul YES

G Youth Voting in Local Elections NO

### ORDINANCES AND DECLARATIONS OF POLICY

H Neighborhood Commercial Districts and City Permitting YES

I Real Estate Transfer Tax NO

J Parcel Tax for San Francisco Unified School District NO

K Affordable Housing Authorization NO

L Business Tax Based on Comparison of Top Executive's Pay to Employees' Pay NO

### DISTRICT MEASURES

RR CALTRAIN SALES TAX YES

**By George Wooding, Chair of Government and Elections**

### EXCOMM. - HOW TO REACH US:

**President:** Charles Head, [charlesnhead@hotmail.com](mailto:charlesnhead@hotmail.com)  
**Vice President:** Glenn Rogers, [alderlandscape@comcast.net](mailto:alderlandscape@comcast.net)  
**Recording Secretary:** Charles Head, [charlesnhead@hotmail.com](mailto:charlesnhead@hotmail.com)  
**Corresponding Secretary:** Cindy Beckman, [MarinaFlats@gmail.com](mailto:MarinaFlats@gmail.com)  
**Treasurer:** Greg Scott, [lgscpa@icloud.com](mailto:lgscpa@icloud.com)  
**Member at Large:** Richard Frisbie, [frfbeagle@gmail.com](mailto:frfbeagle@gmail.com)



## A LETTER FROM THE CSFN LAND USE AND TRANSPORTATION COMMITTEE

### HOUSING ACTION ALERT!

**Write to Board of Supervisors today! Call in tomorrow!**

**Support Resolution Item 29, File 200955**

*Resolution urging the Association of Bay Area Governments in its upcoming Regional Housing Needs Allocation (RHNA) Process to focus on San Francisco's unmet needs for housing affordable to low- and moderate-income residents, and to maintain the current RHNA allocation level of above-moderate housing in San Francisco. (attached)*

Supervisor Gordon Mar has introduced a very important resolution to the Board of Supervisors opposing the proposed ABAG (Association of Bay Area Governments) requirement that San Francisco BUILD EVEN MORE MARKET RATE HOUSING as part of our assigned RHNA goals. Mar's resolution calls for holding the line on market-rate housing and working towards more affordable housing first. This resolution will be voted on at the BOS tomorrow afternoon (agenda attached). Please write in and call in to support the resolution!

**The increase in our RHNA goals is more dangerous than any of the housing bills that are circulating in Sacramento.** Why? Because most likely, San Francisco will NOT meet our RHNA quota, in which case, Scott Wiener's SB 35 will force **ALL market rate developments to be approved by-right** with NO public input as long as they offer a measly 10% affordable housing

According to Supervisor Mar,: "We need to ensure our housing goals reflect the needs of our residents, and in San Francisco, that means prioritizing housing that's actually affordable to the people who live here. That's why I wrote this resolution, why I commissioned the City's first ever Jobs-Housing Fit Report, and why I authored legislation to require these reports going forward."

"San Francisco has far exceeded its market-rate housing goals with 17,373 units permitted between 2015-2019. Meanwhile, we've vastly under-produced new housing that is actually affordable."

"What we build and who we build it for matters, and the speculative market won't solve a problem it's helped to create. We need to prioritize actually addressing the housing affordability needs of our residents, and that begins with setting the right goals."

**More talking points from one of our neighborhood activists:**

- According to [realtor.com](https://www.realtor.com), there are 2,254 homes of all types for sale in San Francisco.
- According to Redfin, there are 444 homes in San Francisco with an asking price above \$800,000 that have been on Redfin for over 60 days!
- If we cannot move our current inventory of homes for sale, what makes ABAG think that we can do better if we add to this inventory!
- The full impact of COVID-19 on housing is yet to be seen and appreciated. The "For Rent" signs are all over the place, and that is just the beginning. Our local lawmakers have been trying to save tenants from eviction caused by COVID-19. Nothing can be more anachronistic in this climate than to push for more market-rate housing when homes are sitting empty and price reductions haven't cut a dent in reducing the for-sale inventory.
- According to Trulia, 83 homes have reduced their price just in the past week.

PLEASE write to the BOS today!

[Board.of.Supervisors@sfgov.org](mailto:Board.of.Supervisors@sfgov.org);  
[Catherine.Stefani@sfgov.org](mailto:Catherine.Stefani@sfgov.org);  
[dean.preston@sfgov.org](mailto:dean.preston@sfgov.org);  
[Gordon.Mar@sfgov.org](mailto:Gordon.Mar@sfgov.org);  
[matt.haney@sfgov.org](mailto:matt.haney@sfgov.org);  
[mandelmanStaff@sfgov.org](mailto:mandelmanStaff@sfgov.org);  
[Shamann.Walton@sfgov.org](mailto:Shamann.Walton@sfgov.org);  
[Aaron.Peskin@sfgov.org](mailto:Aaron.Peskin@sfgov.org);  
[Ahsha.Safai@sfgov.org](mailto:Ahsha.Safai@sfgov.org);  
[Hillary.Ronen@sfgov.org](mailto:Hillary.Ronen@sfgov.org);  
[Norman.Yee@sfgov.org](mailto:Norman.Yee@sfgov.org);  
[Sandra.Fewer@sfgov.org](mailto:Sandra.Fewer@sfgov.org)

Thanks very much.

**Kathy Howard, Delegate SPEAK**



**Greater West Portal Neighborhood Association***Families working to improve their neighborhood*

September 8, 2020

**RESOLUTION REGARDING PROPOSED BUILDING AT 148-166 KENSINGTON WAY**

Whereas: The project would risk destabilizing a fragile, steep, rock slope designated a seismic hazard zone and falling within the City of San Francisco Edgehill Mountain Slope Protection Area. The area has a history of repeated dangerous landslides provoked by excavation including in 1958, 1967, 1978, 1982, 1995, 1997 and 1998, one slide requiring demolition of a home and another dumping rubble to the second story of nearby homes. The project location is proximal to 1997 landslide. No remediating solution is possible to satisfactorily prevent this risk.

Whereas: The project would cause negative ecological impact, destroying an acre of wooded green space including precious native forest which currently harbors wildlife and threatened native plants and provides shade, tranquility and natural splendor in an area short on same. Trees capable of absorbing 3 tons of CO<sub>2</sub> yearly would be replaced with a mass of cement generating 4,700 tons of CO<sub>2</sub> in its manufacture, merely for the foundations of the five luxury homes carved into Edgehill Mountain.

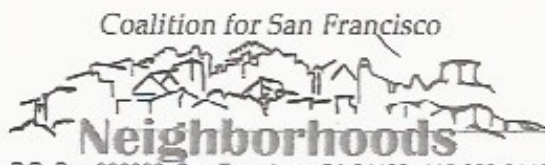
Whereas: Traffic hazard and congestion would significantly increase on a 15.5 foot two-way street already too narrow for cars to pass in presence of parked vehicles and challenging for emergency vehicles to navigate despite being an essential route between the SF Fire Station 39 and adjacent neighborhoods. The proposed addition of new driveways on a blind curve at a site frequented by playing children and families would be a hazard to drivers, cyclists and pedestrians.

Whereas: The project would emit damaging air pollution affecting neighbors and hundreds of nearby schoolchildren, many traversing the site daily en route to three schools. Particulate matter, including dangerous silica dust, would be heavily aerosolized in the excavation and removal of an hillside-worth of Franciscan Chert rock. Chert is a hard, fine-grained sedimentary rock composed of microcrystalline crystals of quartz, the mineral form of silicon dioxide.

Whereas: The project would cause negative aesthetic impact. The five proposed homes are vastly out of scale with neighboring dwellings, each comprising 2 to 5 times the square footage of existing homes on Kensington Way and designed in a block-like modernist style inharmonious with the multi-level roofs of surrounding buildings and towering forty feet above them, blocking light and air flow.

Resolved: The proposed development at 148-166 Kensington Way is a danger and detriment to both the surrounding neighbors, the local environment and nearby schoolchildren.

Resolved: The Edgehill project should either be terminated or relocated via a land swap.



P.O. Box 320098 San Francisco, CA 94132 415-262-0440

## Member Renewal

Name of Organization \_\_\_\_\_

Mailing Address \_\_\_\_\_ SF 941 \_\_\_\_\_ Contact E-mail \_\_\_\_\_

**Current Officers**

Name	Office	Address (with ZIP)	Email Address	Phone

**CSFN Delegate**

Name	Address (with ZIP)	Email Address	Phone

**If your organization has alternate CSFN delegates:**

Name	Address (with ZIP)	Email Address	Phone

NEWSLETTER MAILING LIST – Each member is entitled to receive two copies of CSFN’s monthly newsletter Neighborhood Views as part of their membership fee. The first copy goes to the delegate and the second to a person designated by the organization. A member of an organization’s Board of Directors may subscribe to the CSFN newsletter at a rate of \$10 per year. Other persons may subscribe at \$15 per year. If you prefer to view the newsletter online or download it from the website [www.csfn.net/newsletter](http://www.csfn.net/newsletter) check the box below and leave the following lines blank. Additional paid copies use the back of this page. Include address and zip codes.

- Email us the newsletter to following email address(es): \_\_\_\_\_
- Do **not** send us a hard copy.
- Send a hard copy to:

Name	Office	Address (with ZIP)	Phone

**DUES, DONATIONS AND NEWSLETTER SUBSCRIPTIONS**

CSFN Annual Membership dues are \$45. Organizations wishing to include an additional donation to CSFN are encouraged to do so. Please add \$10 for each additional newsletter subscription for your organization’s board members and \$15 for other members. Make check payable to CSFN and mail to CSFN POBox 320098 SF CA 94132.

Annual Membership Dues: \$45.	_____
Newsletter Subscriptions: @ \$10.	_____
Newsletter Subscriptions: @ \$15.	_____
Additional Donation	_____
Total to CSFN	_____
<b>Thank You!</b>	

**CSFN Membership Certification**

CSFN Bylaws (Article II, Section A-G) require each voting member organization to certify that it has a membership of 35 or more in order to maintain voting privileges. Organizations not having the required membership are encouraged to join or retain membership as associate members without voting privileges.

Member Organization (35 or more members) \_\_\_\_\_

Associate (non-voting) Member Organization \_\_\_\_\_

Certifying Signature \_\_\_\_\_

Address if not listed above \_\_\_\_\_

**CSFN Annual Membership Fee is Due in January. If not received by March 1, voting rights will be withdrawn.**